

BACK

Description

Engine Model : S-15XM
HP Category : 14.91 - 18.64 kW (20-25 HP)
Type : 4 Stroke, Direct injection Diesel engine
No. of cylinder : 1
Bore & Stroke : 120 x 136 mm
Displacement : 1537 cm³
Rated engine speed : 1650 r/min
Air cleaner : 3-Stage Oil bath type
Cooling system : Water cooled, with no loss tank
Transmission : Single diaphragm type-280 mm diameter 279.40 (11)
Clutch : Single diaphragm type-280 mm diameter 279.40 (11)
No. of gears : 8 forward, 2 reverse speeds

Gear speed (km/h)	
152.40 X 406.40 mm with (6*16) front and 314.96 X 711.20 mm (12.40*28) rear type	
Forward	3.10 to 28.43
Reverse	2.70 & 9.30

P.T.O.

: 1650 engine r/min for rated engine speed at 1000 r/min. 6 splines for 540 r/min (optional)

Brakes

: Dry disc type brakes

Hydraulics

: Live hydraulics

i) Position control

: To keep lower links on desired height

ii) Automatic draft control

: To keep uniform draft

iii) Mix control

: For maximum work capacity in farm

Lifting capacity

: 1000 kg on lower link ends

Linkage:

3-point linkage

: Suitable for 3-point linkage category-I, Category-II type implement pins

Steering

: Heavy duty single drop arm with mechanical steering for better operation & operator's comfort.

Weight & dimension

Total length	3260 mm
Total width	1690 mm
Total Height	2395 mm
Wheel base	1930 mm
Minimum ground clearance	400 mm
Tractor weight	1870 kg
Wheel track	Front 1330 mm Rear 1350 mm with 314.96 X 711.20 mm (12.40*28 tyre size)

Tyres

152.40 X 406.40 mm, 314.96 X 711.20 mm (Front 6.00 x 16, Rear 12.40 x 28)

Electricals & instruments:

Electricals : 12 volt, 88 A battery starter motor & alternator headlight and parking lamps

Instruments : Engine r/min with direction indicators & hour meter, fuel gauge, ammeter and water temperature gauge & oil pressure gauge

Features:

- Single cylinder water cooled engine
 - 279.40 (11) clutch for easy gear operation & long life
 - 28.40 km/h for maximum speed-carrying work on road
 - Live hydraulics
 - 1000 kg hydraulic lifting capacity
 - Big brakes for effective braking
 - Adjustable sliding P.U. seat for operator's comfort
 - Fuel tank capacity-45 litre
 - Easy reach to fuel tank system & transparent water separator for timely water drainage
 - Tap off connection for tipping trailer
 - Adjustable rod for more transport height
 - High capacity 88 A battery for easy start & long life
 - Isolator valve for ancillary use
- *For product improvements specifications are subject to change without any prior notice.

Warranty: 2 years or 2000 hours, whichever comes first.



Mera **SWARAJ**

SWARAJ DIVISION

Phase IV, Industrial Area, S.A.S Nagar (Mohali),
Punjab - 160055. Phone: 0172 2271620 to 27; 0172 2270820 to 23.
Website: www.swarajtractors.com

Authorised Dealer:

FRONT

www.swarajtractors.com



Presenting Swaraj 825 XM in 18.64 kW (25 HP) Category

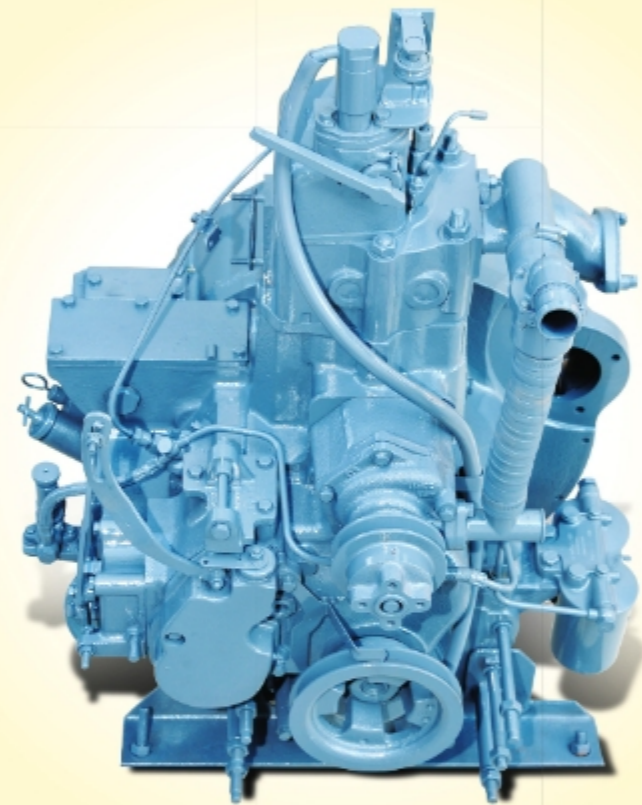
EXTRA POWER & MILEAGE WINNER OF HAULAGE

NEW FUEL EFFICIENT
825XM

NEW



Mera **SWARAJ**



Single Cylinder Water Cooled Engine

- **Powerful:** More back up/ maximum torque gives sufficient power on slopes
- **Fuel efficient:** Less consumption due to less SFC
- **Water cooled:** Engine temperature remains balanced due to water cooled engine, hence low maintenance of engine.
- **1650 rated r/min:** Full power & less engine wear during haulage & farming due to rated r/min.

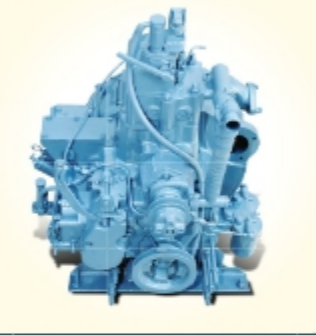
Raised Surface

- Tough driving conditions like sand evicton & to pull brick loaded trolley without breaking motion.



Swaraj Tractor is the first assurance of customer. Its attractive style increases their enthusiasm. To operate with pride, Swaraj Tractor is really a complete tractor loaded with unlimited features.

POWERFUL ENGINE



Fuel efficient water-cooled engine. Better pulling

BIG DISC BRAKES



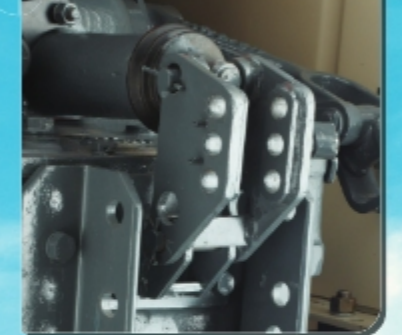
Effective braking on slopes with trailer

MAXIMUM SPEED ON ROAD



More speed, more work, more savings

TOP LINK ARRANGEMENT WITH DIFFERENT HOLES



Top link is adjustable according to soil requirements

TRANSPORT LOCK



Locks the implement at desired places

TAP OFF CONNECTION



Connect outer hydraulic attachments with ease

FUEL TANK



Fuel tank with 45-litre capacity

BETTER ERGONOMICS



More comfort for driver