

Specifications

Model	NeoStar B2441	
Engine	Type	Kubota DI105-E4, E-TVCS, liquid-cooled, diesel engine
	No of cylinders	3
	Total displacement (CC)	1123
	Maximum torque	70 N.M.
Transmission	Clutch	Dry Single Plate
	Steering	Power Steering
	Transmission	Gear shift, 9 forward and 3 reverse
	Braking system	Oil immersed brakes (OIB)
	Speed Range (Km/hr)	1.0-19.8
	Min. turning radius (with brake) (m)	2.1
Hydraulic Unit	Hydraulic control system	Position Control & Super Draft Control
	Three point hitch	Category I
	Max. lift force At lift point (Kg)	750
PTO	PTO / Engine speed(rpm)	540 , 980
Capacities	Fuel tank	23 L
Dimensions	Overall length (without 3P) (mm)	2410
	Overall width (mm)	1015, 1105
	Overall height (Top of steering wheel) (mm)	1280
	Wheel base (mm)	1560
	Min. ground clearance (mm)	325
	Weight (Kg)	630
	Tires	Front (mm)
	Rear (mm)	8.3 - 20

Kubota

JAPAN'S NO.1* TRACTOR COMPANY

B

NeoStar - B2441 (24HP Category)

With a **E-TVCS engine**, power steering and a compact design, the B2441 provides the maneuverability and power needed for interculture & orchard application.



4 Wheel Drive



Power Steering



2.1m Turning Radius



KRX 101D SPECIFICATIONS

3-point link	Normal 3p
Total Width (mm)	1,211
Width of Tiling (mm)	1,014
Kind of blade	'L' shape blade for flange type
Number of Flange (pcs)	5
Blade / Flange (pcs)	4
Total Blade number (pcs)	20
Weight (kg)	180

* The company reserves the right to change the above specifications without notice.
 * This brochure is for descriptive purpose only.
 * Please contact your local Kubota dealer for warranty information.
 * The operator's manual should be consulted for more complete operational information.

Kubota received the Deming Prize which is the highest proof of recognition of major advances in quality improvement. Kubota has also received the ISO9001 Certification which is the international standard of quality management systems, the ISO14001 Certification which is the international standards related to environment management, and the OSHAS 18001 Certification which is the international assessment series of occupational health and safety systems.



Calculated according to our criteria. The actual capacity you achieve may be different.
 The specifications, information, and appearance of the machines herein are subject to change without notice.

Kubota Agricultural Machinery India Pvt Ltd.

No.94, TVH BELICIAA, TOWER- 1,
 8th floor, MRC Nagar, Chennai - 600 028
 Tel : +91 - 44 - 6104 1500 Fax : 044 6104 1600
 Web : www.kubota.co.in, Follow Us : [YouTube](#) [Facebook](#) [Instagram](#)

Toll Free : 1800 309 1694

KUBOTA/ FEBRUARY 2023/ ENGLISH

*Disclaimer: A per Japan's Journal GYOKAI, Kubota ranks No.1 (Agri Machinery) for the year 2021 in turnover

*Terms & Conditions Apply

For the toughest inter-culture & multi-utility applications nothing out performs the Kubota 4WD tractor.



E-TVCS Engine (24 HP, category)

The B2441 (24 HP category) liquid-cooled diesel engine with E-TVCS (three vortex combustion system) offers excellent power, high torque, cleaner emissions, low noise and low vibration

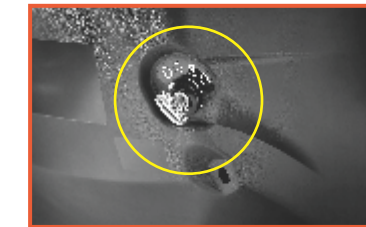
Compact Design

B2441 is compact and sleek and have a Narrow Rear Width of 1015 mm (3.3 ft). Best Suitable for inter-culture in large number of crops.



Backlit Dash Panel

The dash panel features large characters and a white background, so that you can clearly keep track of functions like engine speed, Engine temperature, fuel level and more. The backlight is automatically activated when the headlights are switched on.



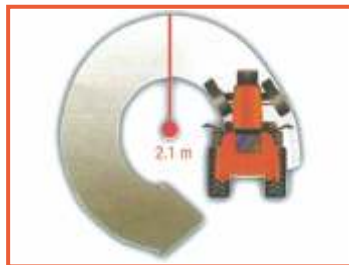
Engine key stop solenoid

Operator can stop engine only by turning key



Power Steering

This must - have feature provides nimble handling while greatly reducing fatigue during long hours of operation.



Minimum Turning Radius

A 2.1 m turning radius provides easy maneuverability in narrow farms and is most suitable for inter-culture operations.



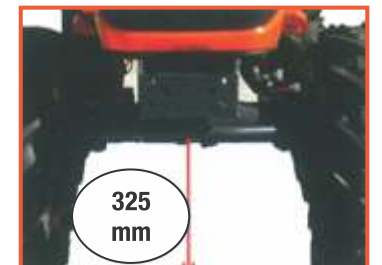
4 Wheel Drive

The 4 Wheel Drive provides better maneuverability and traction power. Provides option of working in wet lands without getting struck in the mud.



Super Draft Control (SDC)

Easy operations with implements on various fields



High Ground Clearance

High ground clearance of 325 mm enables easy movement in farm lands without damaging the base of the tractor.



Flat Deck

Easy to get on & get Off the tractor
Plenty of foot Space

Oil Immersed Brakes

Breaks are immersed in the oil sump. Reduces the wear & tear of the breaks and increases the life.



Full Range Of Speeds

With a maximum speed of 19.9 km/h, as well as 9 forward speeds and 3 reverse speeds, the B2441 allows you to perfectly match your speed to your job's particular needs.



Dual Speed PTO

Use with 540 & 980 rpm PTO. Use with high performance sprayers and a variety of other implements